

english



Transforming
the future of mobility.

DB E.C.O. Group



“We globally transform tomorrow’s innovative and sustainable mobility and transport solutions”

Niko Warbanoff, CEO
DB E.C.O. Group

Deutsche Bahn is pooling its expertise. Engineering, Consulting, and Operations are being combined into the DB E.C.O. Group.

We provide our customers with services in the fields of engineering, consulting, and operations that focus on the future. The intelligent integration of our infrastructure expertise into all service areas forms the backbone of the DB E.C.O. Group. We are able to merge our in-depth knowledge of the integrated rail system with digital technology along the entire length of the value chain. Thus the DB E.C.O. Group optimally combines expertise in engineering, rail operations, and digital systems. This puts us in an excellent position to press ahead with digitalizing every aspect of the rail system.

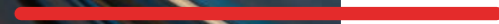
Fostering Strong Rail, we globally transform tomorrow’s innovative and sustainable mobility and transport solutions. We are 7,600 employees from 96 nations and all disciplines – committed, international, and qualified. We work closely with our business partners to deliver reliable, cost-effective solutions for complex projects.



The DB E.C.O. Group stands for the integrated railway system: from feasibility studies to railway operation for infrastructure, rolling stock, and everything in between.



Engineering
sustainable
innovations
for tomorrow.



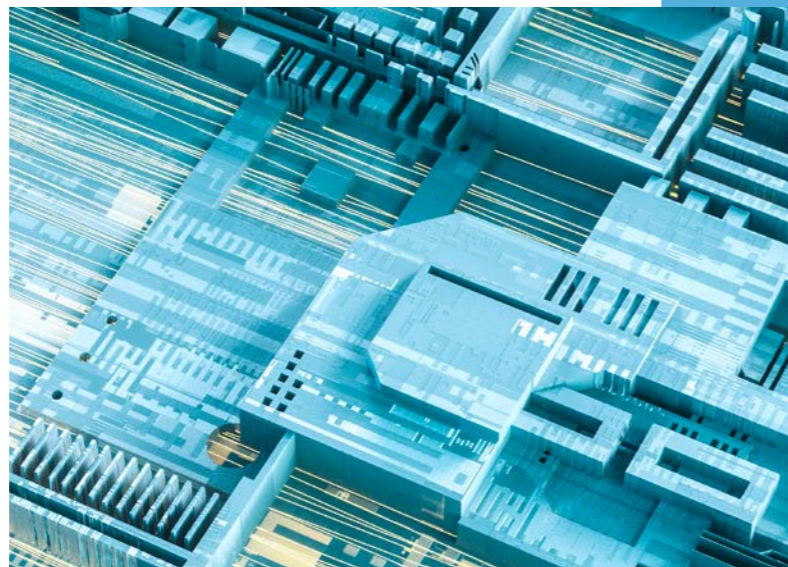
Sustainable innovations for tomorrow

In Engineering, we see ourselves as a technology leader in rail infrastructure design and construction. We drive the advancement of technology, for example in implementing the digitalization of the railways, in applying building information modeling in our projects, and in acquiring and recording data by mobile and digital means.



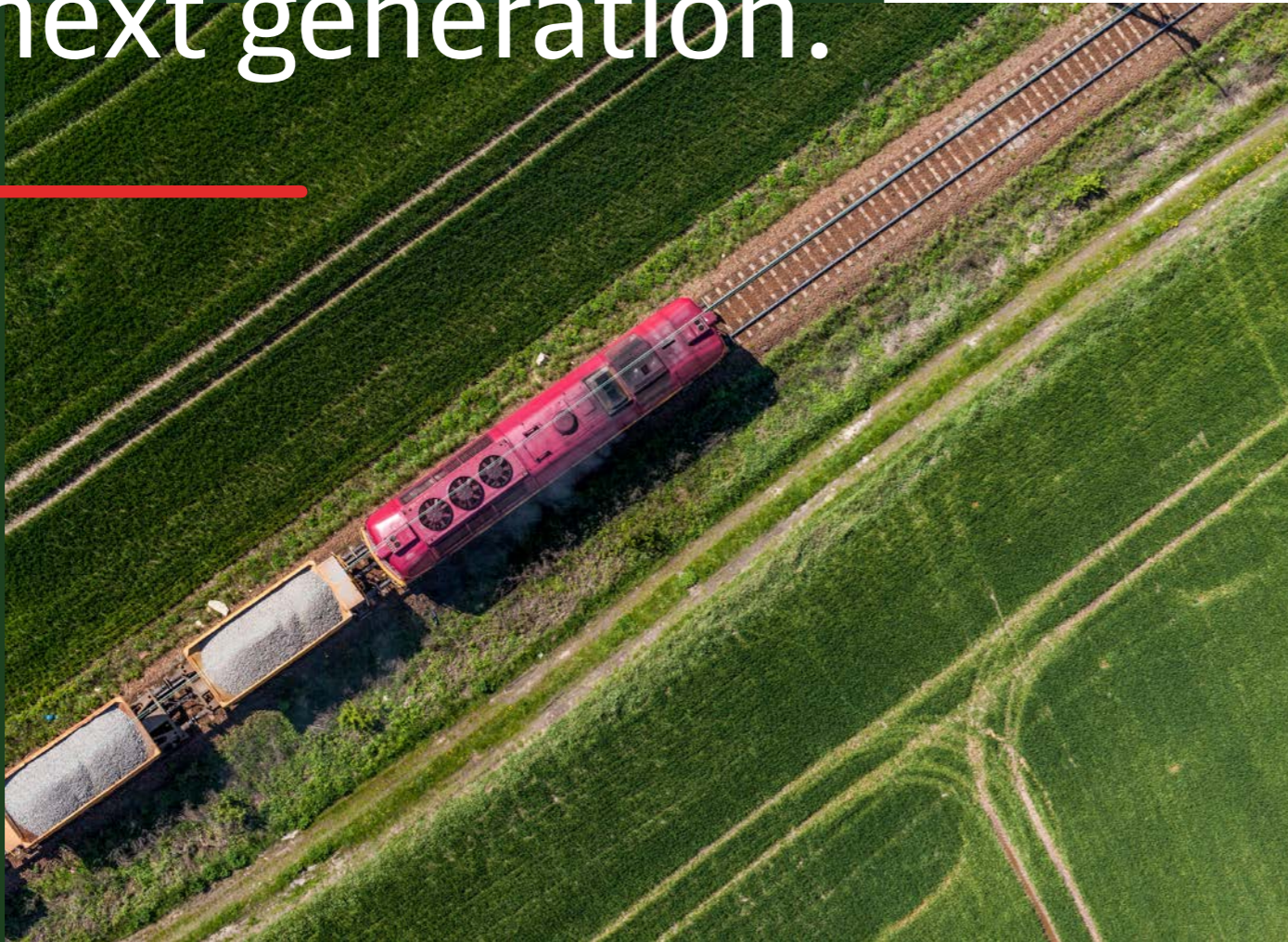
Mobility solutions of the future

Our Consulting services for mobility and transport solutions provide added value to our customers worldwide. We combine consulting services for the entire rail system with IT expertise and, drive topics like condition-based and predictive maintenance.



Consulting mobility solutions of the future.

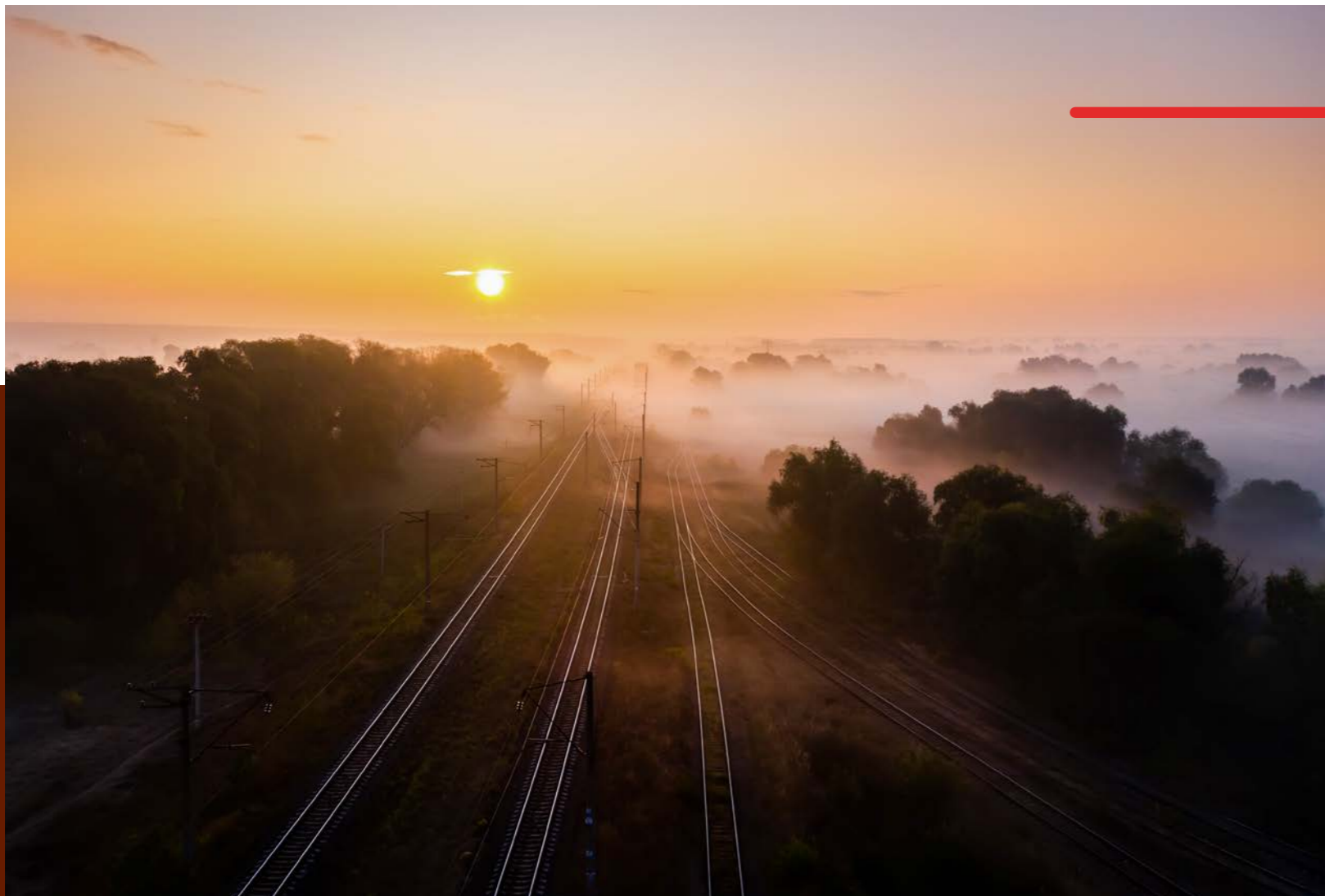
Operations of railways for the next generation.



Railways for the next generation

In Operations, our activities outside Europe enable us to apply our experience and know-how in the operations and maintenance of complex railway systems around the world. We do so to make people mobile and bring goods to their destination.





Our contribution to a better world

The world needs Strong Rail. Without it, the challenges posed by globalization, urbanization, population growth, and especially climate change cannot be met. With our work, the DB E.C.O. Group is making an important environmental contribution for the survival of our planet. And that makes us proud.

Strong companions for our clients

The companies under the umbrella of the DB E.C.O. Group stand for our expertise in engineering, rail operations, and digital systems.

DB Engineering & Consulting offers outstanding consulting, design, and implementation services for infrastructure and mobility solutions in Germany and worldwide.

www.db-engineering-consulting.com

Deutsche Bahn International Operations operates and maintains passenger rail transport and rail freight services including rolling stock and rail infrastructure outside Europe.

www.io.deutschebahn.com

DB E.C.O. North America is a rail and transit consultancy that offers specialized management and technical consulting services to agencies, private companies, and operators in rail and public transportation in the United States and Canada.

www.db-eco.us

infraView operates one of the world's largest IoT platforms for condition monitoring and predictive maintenance in the railway sector and offers solutions for monitoring vehicles and systems.

www.infraview.net

ESE is the leading partner for the development of complex mobility system solutions, providing technology consulting, technical system and software development as well as assessments of safety-critical applications.

www.es.de

inno2grid develops sustainable mobility and energy solutions for municipalities, districts and companies – from consulting and conception, to offering software and service solutions.

www.inno2grid.com

Last updated

February 2024

Published by

DB E.C.O. Group
DB Engineering & Consulting GmbH
EUREF-Campus 14
Torgauer Strasse 12-15
10829 Berlin
Germany

www.db-eco.com

Contact

contact@db-eco.com

Concept and design

LIGALUX GmbH Hamburg/Munich

Photography

Getty Images: Cover, p. 4 – 11
Jet-Foto: p. 2

Printed

Climate-neutrally printed on Munken
Kristall brilliant white. This paper
consists of 100 percent recycled fibers,
it is certified according to FSC®
criteria, and has been awarded with
the EU Ecolabel.

