



E.C.O. Group

Transforming the future of mobility.

Berlin, November 2020

DB Group



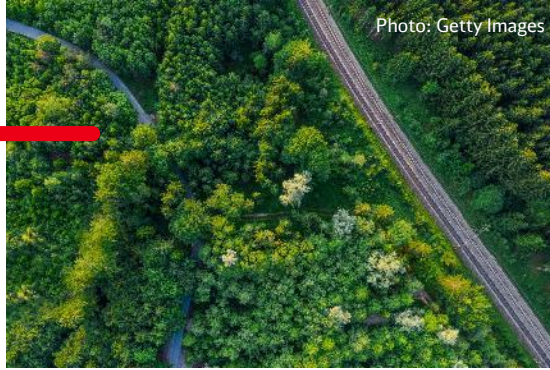
Photo: Deutsche Bahn AG / Max Lautenschläger

Deutsche Bahn
transports

Passengers

7,300,000

a day on trains and buses
in Germany



Stations

5,700

in Germany

Employees

338,000

around the globe

Over

Metric tons

1,000,000

of goods by rail in Germany and
Europe on weekdays

km

33,400

Bridges

25,000

Tunnels

740

in the railway network
of DB



DB history

1835

The beginning: Rail line connecting Nuremberg and Fürth with the steam locomotive „Adler“

1933

First high-speed trains from Hamburg to Berlin

1991

New Intercity Express (ICE) trains form the first high-speed rail network in Germany

2002–2010

Various acquisitions, including Arriva, BAX Global, NS Cargo, DSB Gods, Spain-TIR, Romtrans

1920

German Imperial Railway (Deutsche Reichsbahn) established

1949

Split into Deutsche Bundesbahn and Deutsche Reichsbahn

1994

Deutsche Bundesbahn and Deutsche Reichsbahn merge to form Deutsche Bahn AG

Today

A leading international mobility and logistics company

Integrated group

Passenger Transport

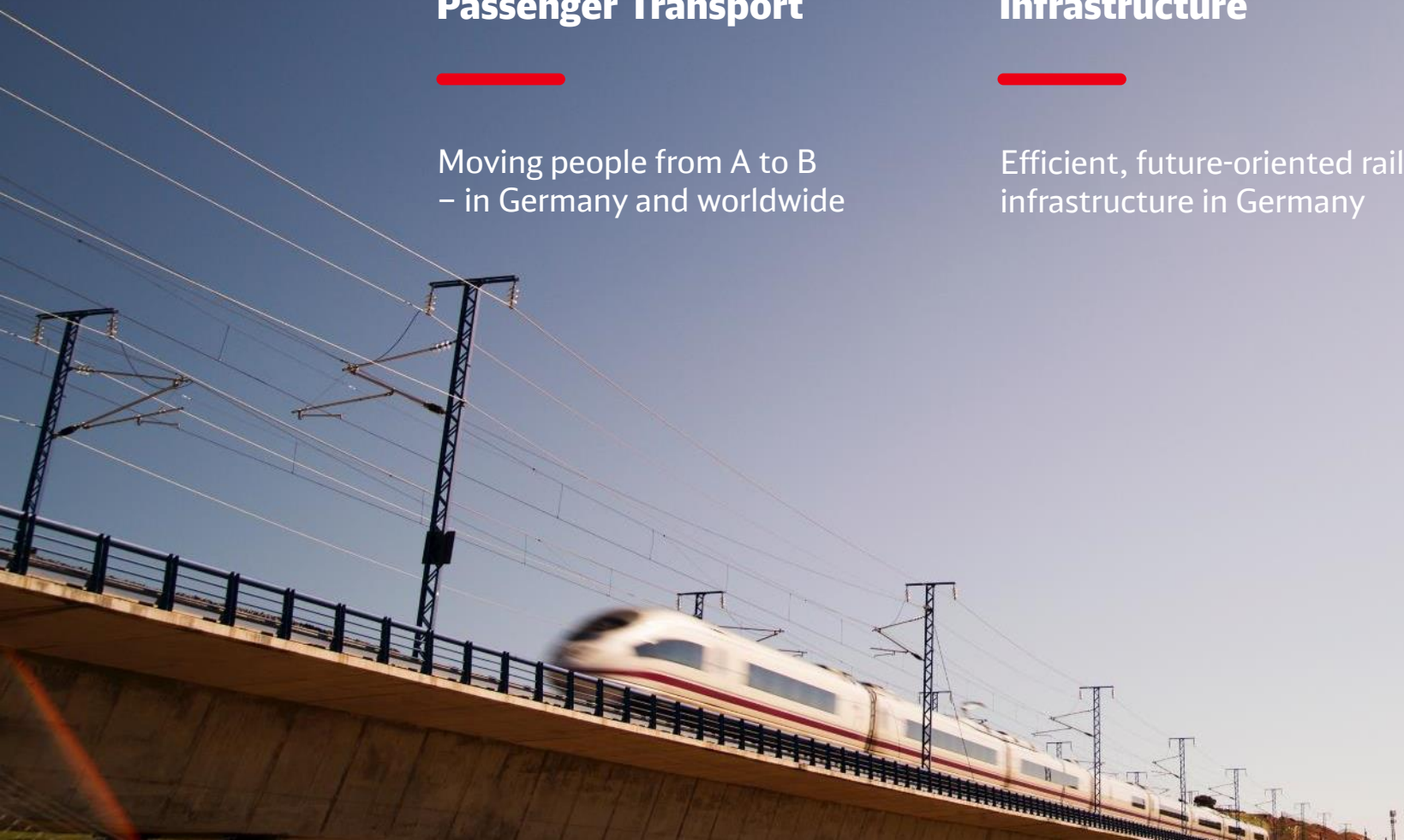
Moving people from A to B
– in Germany and worldwide

Infrastructure

Efficient, future-oriented rail
infrastructure in Germany




Freight Transport and Logistics

Smart logistics by land,
sea, and air





Top market positions






Passenger Transport

	No. 1	Regional and local rail
	No. 2	Long-distance rail
	No. 3	Public road transport

Infrastructure

	No. 1	Rail infrastructure
	No. 1	Operation of rail stations

Freight Transport and Logistics

	No. 1	Rail freight transport
	No. 1	Land transport
	No. 4	Air freight
	No. 5	Ocean freight
	No. 5	Contract logistics

Revenue and EBIT in comparison

Revenue 2019
EUR million

44,431

1994
14,739

EBIT 2019
EUR million

1,837

1994
-2,998

DB E.C.O. Group

Photo: Getty Images





Fostering Strong Rail, we globally transform
tomorrow's innovative and sustainable mobility and
transport solutions.

Our history

1966

Deutsche Eisenbahn-Consulting founded

2003

DE-Consult is made an affiliate of the new DB company DB ProjektBau

2016

DB ProjektBau and DB International merge, forming DB Engineering & Consulting

2019

Merger of DB Engineering & Consulting, Deutsche Bahn International Operations, and infraView under the roof of the DB E.C.O. Group

2002

DE-Consult is wholly owned by DB

2007/2008

DE-Consult becomes DB International and operates as an independent company within the DB Group. DB ProjektBau works on DB's domestic projects, while DB International focuses on non-DB client business in Germany and international projects.

2017/2018

Deutsche Bahn International Operations founded

DB Engineering & Consulting acquires infraView GmbH

2020

DB Engineering & Consulting acquires engineering and software developer ESE GmbH

Part of the DB Group



Chairman	Finance and Logistics	Digitalization and Technology	HR and Legal Affairs	Passenger Transport	Infrastructure	Freight Transport
					DB Netze Track DB Netze Stations DB Netze Energy DB E.C.O. Group	

Managing board DB E.C.O. Group

Chief Executive Officer



Niko Warbanoff

International Markets and Consulting



Andreas Wegerif

Chief Financial Officer



Dr. Ulla Kopp

Human Resources



Michael Fritz



Our specialists –

highly qualified for
our products and
services

Construction supervision

Consulting

Design

**Design review and
acceptance testing**

**Environmental and
geo services**

**Operations and
maintenance**

**Project
management**



Employees

5,600

Nations

88



Since 1966 we have been implementing projects in more than 100 countries and on all continents.



Our mission is to merge our expertise in the integrated rail system with digital technology along the entire length of the value chain. This will enable us to offer our clients forward-looking solutions for Engineering, Consulting, and Operations.



The DB E.C.O. Group stands for the integrated railway system: from feasibility studies to railway operation for infrastructure and rolling stock, and everything in between.

The DB E.C.O. Group offers services within three business units:

Engineering



Consulting



Operations





Engineering sustainable innovations for tomorrow.



Sustainable innovations for tomorrow

In Engineering, we see ourselves as a technology leader in rail infrastructure design and construction. We drive the advancement of technology, for example in implementing the digitalization of the railways, in applying building information modeling in our projects, and in acquiring and recording data by mobile and digital means.

With our **Engineering** services for infrastructure, we lay the foundation for the rail system.

We are building Strong Rail



Providing key resources

We are driving digitalization in engineering



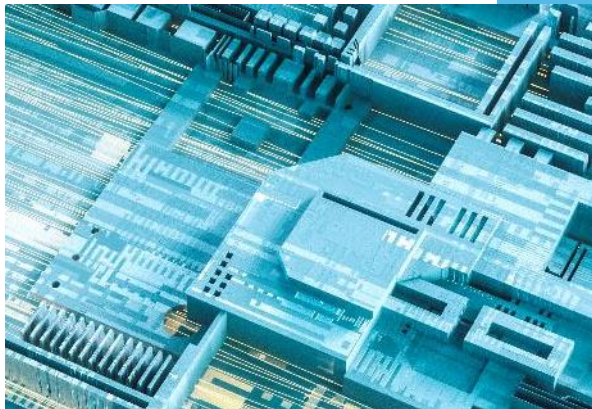
We are growing internationally





Mobility solutions of the future

Our Consulting services for mobility and transport solutions provide added value to our customers worldwide. We combine consulting services for the entire rail system with IT expertise and drive topics like condition-based and predictive maintenance.



Consulting
mobility solutions
of the future.

Photos: Getty Images

Our **Consulting services** for mobility and transport solutions provide added value to our customers worldwide.

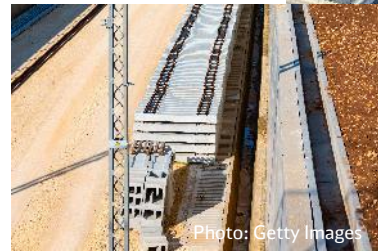
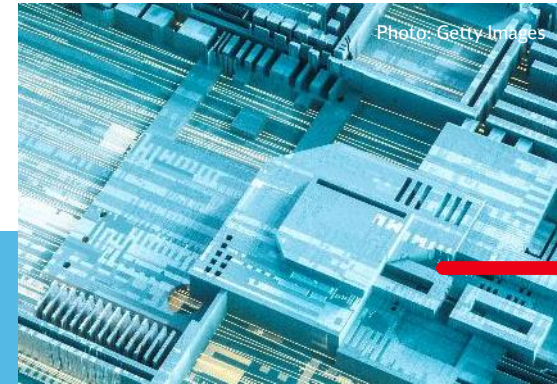
We combine consulting services for the entire rail system

Consulting

Rolling stock



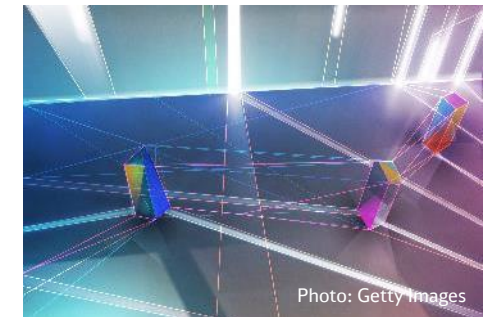
with IT expertise



Infrastructure



Interfaces



Operations of railways for the next generation.

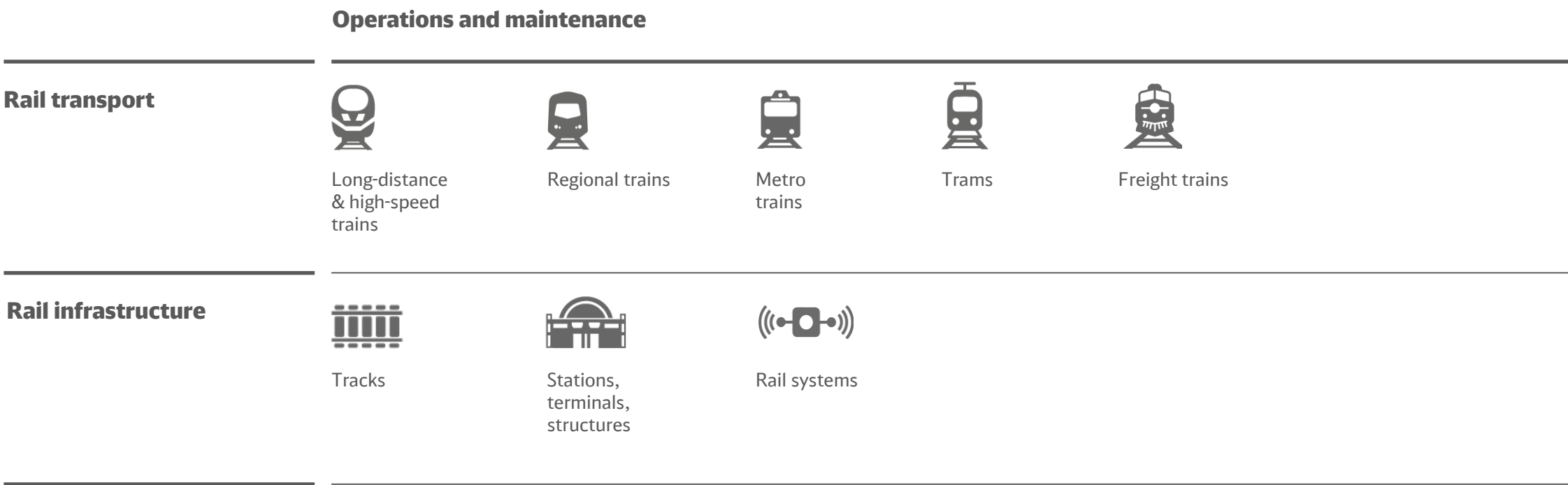


Railways for the next generation

In Operations, our activities outside Europe enable us to apply our experience and know-how in the operations and maintenance of complex railway systems around the world. We do so to make people mobile and bring goods to their destination.



We operate rail services and make our **Operations and maintenance** expertise available to the growing global rail market.



The intelligent integration of our infrastructure expertise into all service areas forms the backbone of the DB E.C.O. Group.

Consulting

Photo: Getty Images

Infrastructure

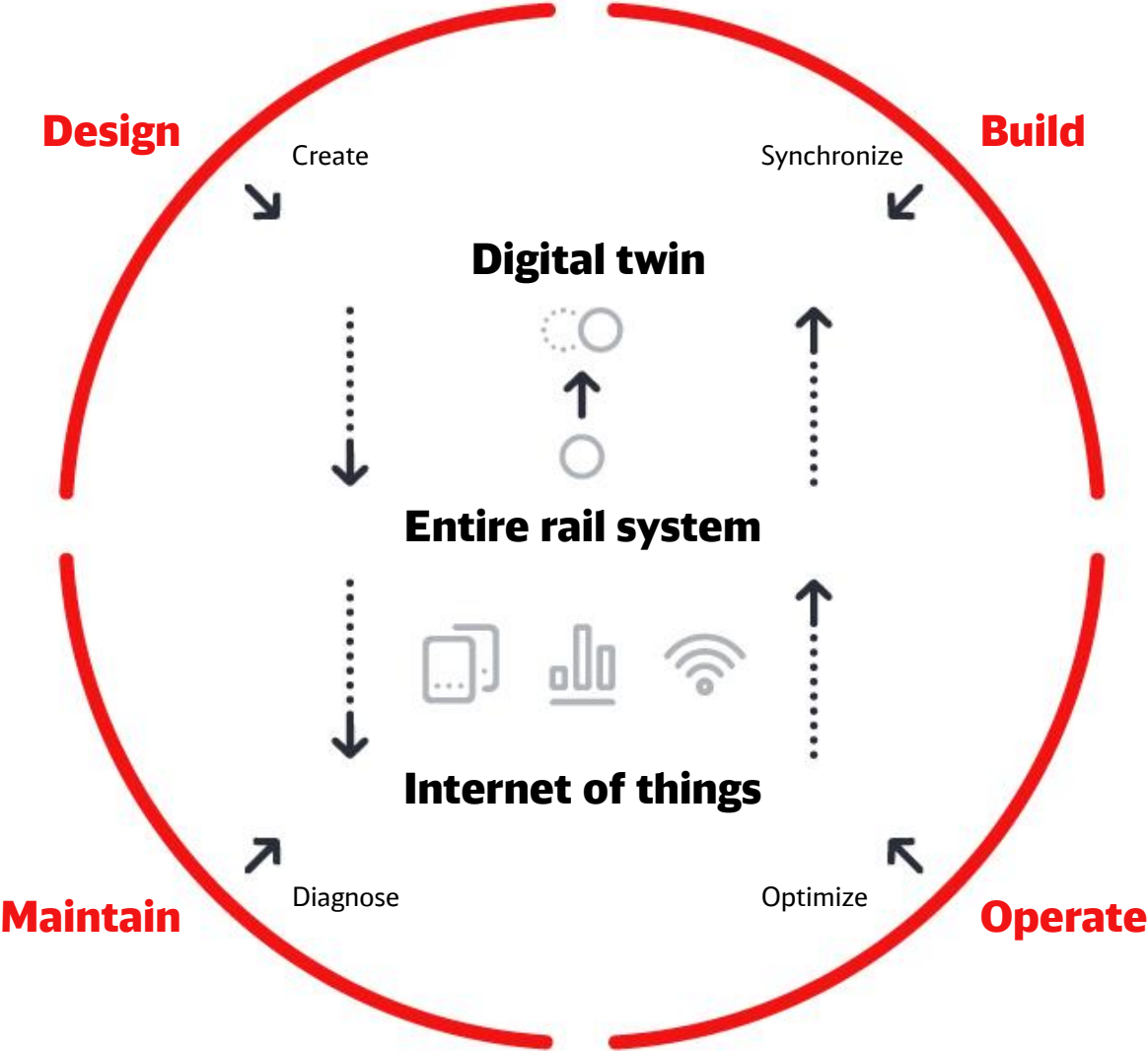
Engineering

Photo: Getty Images

Operations

Photo: Getty Images

We are excellently positioned to drive forward the digitalization of the entire rail system.



**Thank you for your
attention.**