

english



**Transforming**  
the future of mobility.

---

***DB E.C.O. Group***





**„We globally transform tomorrow’s innovative and sustainable mobility and transport solutions.“**

Niko Warbanoff, CEO  
DB E.C.O. Group

Deutsche Bahn is from now on pooling its expertise. Engineering, Consulting, and Operations are being combined into the DB E.C.O. Group.


We provide our customers with services in the fields of engineering, consulting, and operations that focus on the future. The intelligent integration of our infrastructure expertise into all service areas forms the backbone of the DB E.C.O. Group. We are able to merge our in-depth knowledge of the integrated rail system with digital technology along the entire length of the value chain. Thus the DB E.C.O. Group optimally combines expertise in engineering, rail operations, and digital systems. This puts us in an excellent position to press ahead with digitalizing every aspect of the rail system.

Fostering Strong Rail, we globally transform tomorrow’s innovative and sustainable mobility and transport solutions. We are 5,600 employees from 88 nations and all disciplines – committed, international, and qualified. We work closely with our business partners to deliver reliable, cost-effective solutions for complex projects.

**Feasibility studies and financing    Design    Construction supervision    Testing and commissioning    Operation    Maintenance**

The DB E.C.O. Group stands for the integrated railway system: from feasibility studies to railway operation for infrastructure, rolling stock, and everything in between.

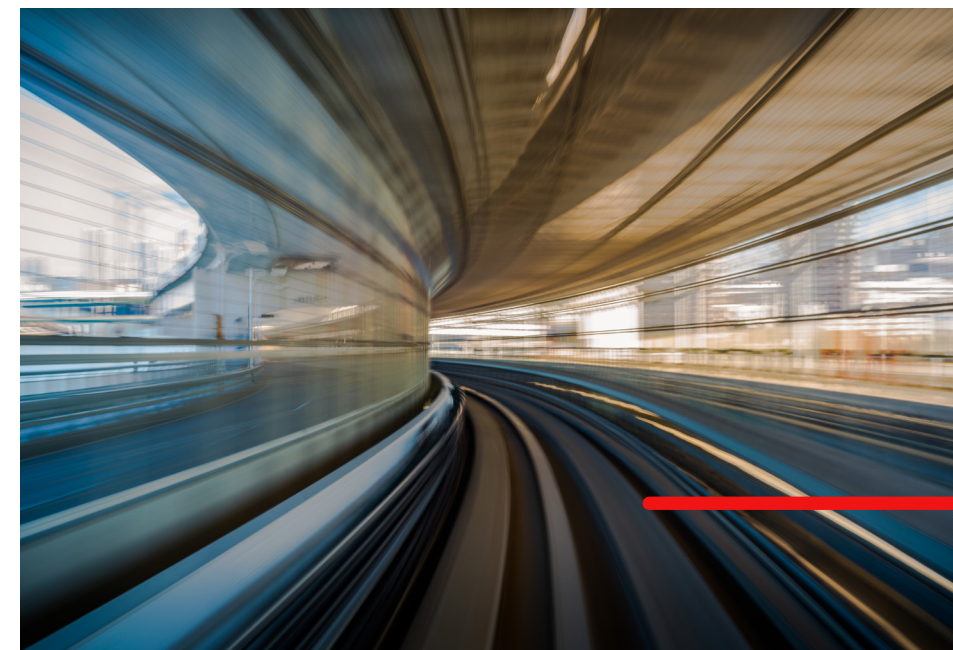




---

# Engineering sustainable innovations for tomorrow.

---



## Sustainable innovations for tomorrow

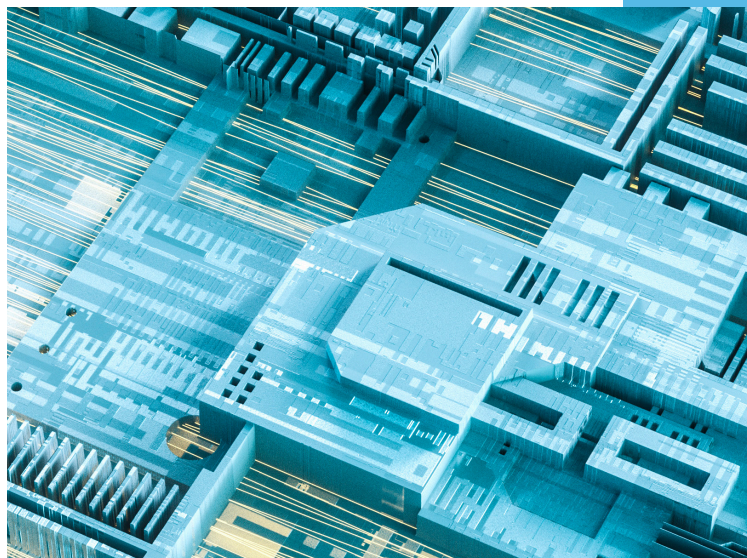
In Engineering, we see ourselves as a technology leader in rail infrastructure design and construction. We drive the advancement of technology, for example in implementing the digitalization of the railways, in applying building information modeling in our projects, and in acquiring and recording data by mobile and digital means.





## Mobility solutions of the future

Our Consulting services for mobility and transport solutions provide added value to our customers worldwide. We combine consulting services for the entire rail system with IT expertise and, drive topics like condition-based and predictive maintenance.



# Consulting mobility solutions of the future.



# Operations of railways for the next generation.

---



## Railways for the next generation

In Operations, our activities outside Europe enable us to apply our experience and know-how in the operations and maintenance of complex railway systems around the world. We do so to make people mobile and bring goods to their destination.







## Our contribution to a better world

The world needs Strong Rail. Without it, the challenges posed by globalization, urbanization, population growth, and especially climate change cannot be met. With our work, the DB E.C.O. Group is making an important environmental contribution for the survival of our planet. And that makes us proud.

## Strong companions for our clients

The companies under the umbrella of the DB E.C.O. Group stand for our expertise in engineering, rail operations, and digital systems.

DB Engineering & Consulting offers outstanding consulting, design, and implementation services for infrastructure and mobility solutions in Germany and worldwide.

[www.db-engineering-consulting.com](http://www.db-engineering-consulting.com)

Deutsche Bahn International Operations operates and maintains passenger rail transport and rail freight services including rolling stock and rail infrastructure outside Europe.

[www.io.deutschebahn.com](http://www.io.deutschebahn.com)

infraView operates one of the world's largest IoT platforms for condition monitoring and predictive maintenance in the railway sector and offers solutions for monitoring vehicles and systems.

[www.infraview.net](http://www.infraview.net)

ESE is the leading partner for the development of complex mobility system solutions, providing technology consulting, technical system and software development as well as assessments of safety-critical applications.

[www.es.de](http://www.es.de)

---

**Release date**

November 2020

**Published by**

DB E.C.O. Group  
DB Engineering & Consulting GmbH  
EUREF-Campus 14  
Torgauer Strasse 12–15  
10829 Berlin  
Germany

[www.db-eco.com](http://www.db-eco.com)

**Contact**

[eco-group@deutschebahn.com](mailto:eco-group@deutschebahn.com)

**Concept and design**

LIGALUX GmbH Hamburg/Munich

**Photography**

Getty Images: Cover, p. 4 – 11  
JetFoto: p. 2

**Printed**

Climate-neutrally printed on Munken  
Kristall brilliant white. This paper  
consists of 100 percent recycled fibers,  
it is certified according to FSC®  
criteria, and has been awarded with  
the EU Ecolabel.

